

# Landgrid Enterprise For Municipalities!



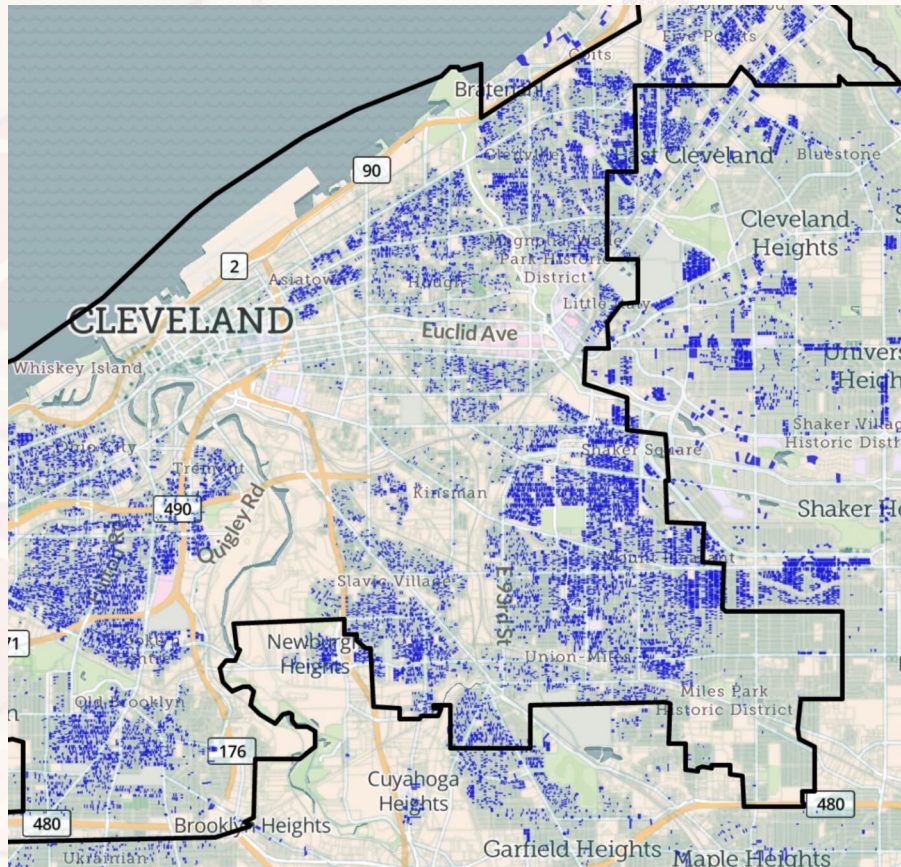
**Loveland Technologies**

[landgrid.com](http://landgrid.com)

[enterprise@landgrid.com](mailto:enterprise@landgrid.com)



# How can Landgrid Enterprise help YOU?



# Landgrid Enterprise

Your trusted partner for property data collection  
& management projects!

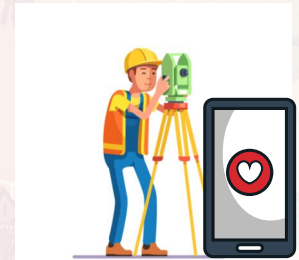
Whether surveying an entire city, tracking properties over time,  
working with multiple datasets, or simply visualizing property data,  
Loveland has your back!



142 million parcels already  
mapped on an easy to use  
platform!



We can import,  
integrate & analyze  
data for you.



Let us & our app handle  
your property SURVEY  
needs.



Dedicated account  
manager to help at all  
times.



Trust our team to build  
custom maps & site for  
you.



Group accounts for  
partner organizations in  
your city.



## Property Maintenance

Whether it is about property condition evaluation or site selection,  
our granular parcel level data will help you in property data  
management challenges.



## Targeted Property Acquisition

With our built in filter & style tools, you can generate a targeted list  
of properties that meet your needs. For instance, if you are looking  
for properties limited to a certain sales price, you can query our  
database to obtain a targeted list for faster, more focused property  
acquisition.

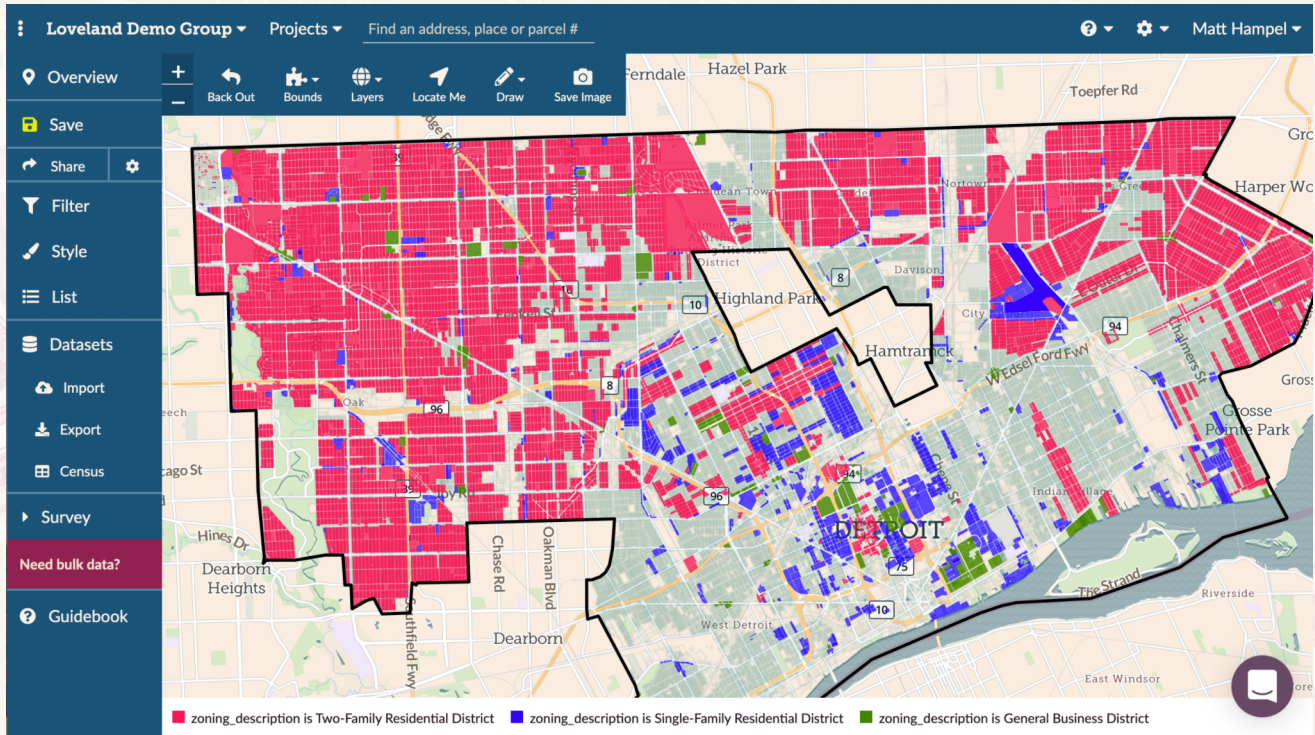
# Land Parcels

## The Underlying Fabric of the American Landgrid



- Parcels are the fundamental unit of land in America.
- Every address, every house, every building, every business, and every vacant lot is located on a parcel.
- Using points on maps can not tell you as much as a parcel can. However, almost all location data can be attached to parcels.
- **Landgrid Enterprise** makes this easy for you. You will find that understanding your land grid at the parcel-level unlocks powerful insights.

# Mapping Tools



- Our **secure, cloud-based platform** makes it easy to:
  - Search data
  - Filter & style
  - Color code maps
  - Survey properties
  - Collect data
  - Import & export your data
  - Manage parcel-level data.
- Our permission system allows you to invite collaborators and choose which if any maps and datasets you want to share publicly or keep private.

# Survey Editor & App

The image shows two interfaces for a survey tool. On the left is the 'Survey Editor' web interface. It has a dark blue sidebar with navigation options: Save, Share, Filter, Style, List, Datasets, Import, Export, Census, Survey (selected), Editor (selected), Feed, Charts, Need bulk data?, and Guidebook. The main area is titled 'Survey Editor' and says 'You are creating a new survey.' It shows two questions. Question 1 is 'Is there a structure on the site?' with a text input 'structure' and a dropdown 'This is a multiple choice question'. Below are 'Answer options' with 'Yes' and 'No' buttons, each with a 'Continue to next question' dropdown. Question 2 is 'Occupancy' with a text input 'occupancy' and a dropdown 'This is a multiple choice question'. Below are 'Answer options' with 'Occupied', 'Unoccupied', and 'Possibly Occupied' buttons, each with a 'Continue to next question' dropdown. On the right is a mobile app interface. It shows a map with a red pin at '71 Oakman'. Below the map is a survey button. Tapping the button leads to a survey screen with the question 'Is there a structure?' and 'Yes'/'No' buttons. At the bottom, it says 'The data will appear in your map on landgrid.com.' and has 'Back' and 'Next' buttons.

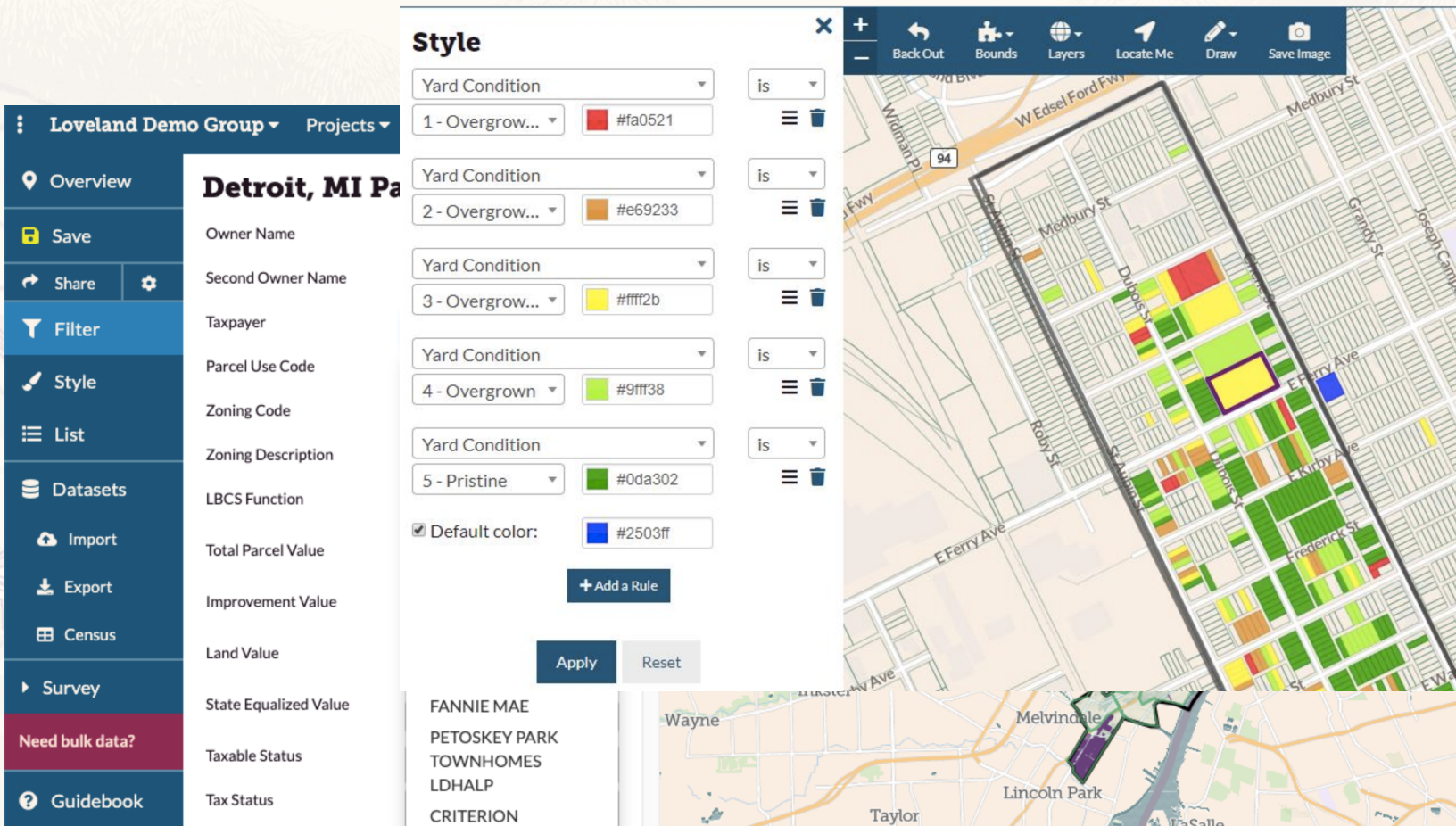
- Gone are the days of carrying paper forms to conduct land surveys. No more having to re-enter that data into Excel when you get back to the office as well
- **Use our editor & app to collect information** - whether that's figuring out how many community gardens exist, which buildings qualify for a roof repair grant, or what residents think about their neighborhood, our tool can help gather that data and make it easy to understand.

# Loveland Survey Expertise



- For large scale surveys, tap into our in-house survey expertise.
- You can rely on our team to **help plan & budget** your survey. We can also help **train surveyors & canvassers** on using the tools.
- Post survey, we can even help with custom data analysis & generate professional reports on survey findings for you!

# Property Data Maintenance & Management



- **Data aggregation** - Lots of property data exists digitally these days, but often different information is stored by different providers - meaning you have to visit multiple sites and do lots of searching to get all the information you need. Landgrid Enterprise makes it easy to import spreadsheets and get all your property info in one place - no more searching!
- **Planning and decision-making** - Rather than scanning endless spreadsheets of data, Landgrid Enterprise makes it easy to visually see the information of interest.
- You don't need to hire a **data genius**!

# USPS Residential & Vacancy Data

## Style

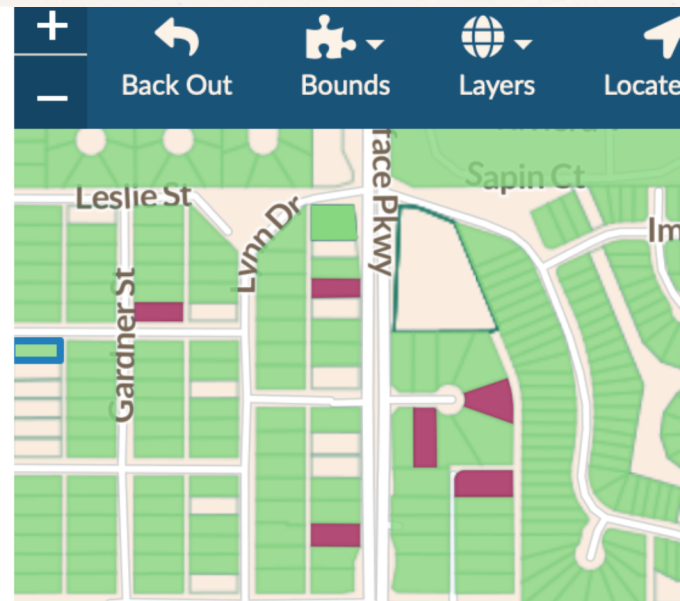
USPS Vacancy  
Y #9e265a

USPS Vacancy  
N #8ad685

☐ Default color: #69387a

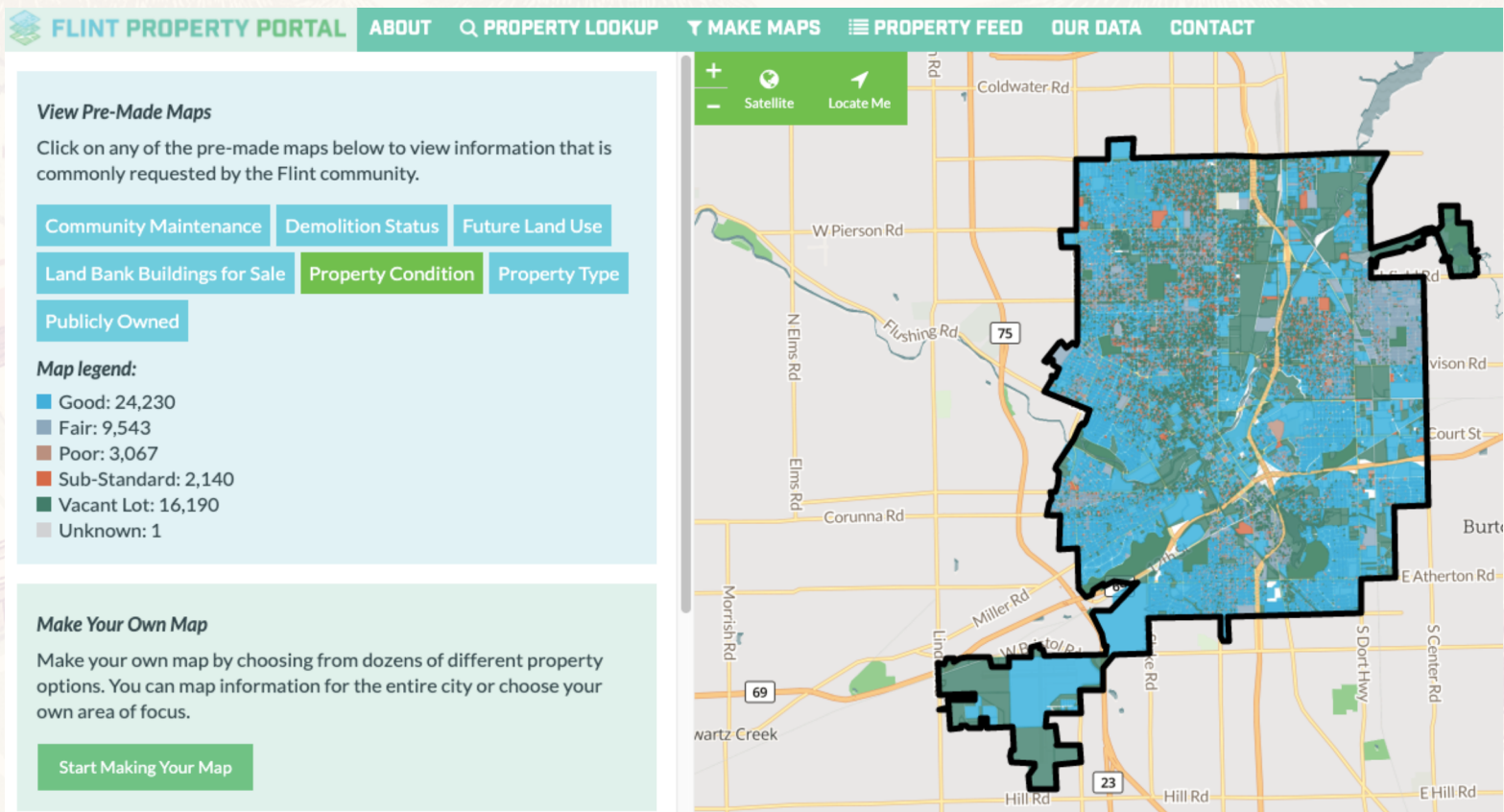
is ≡ 🗑️

is ≡ 🗑️



- We are adding USPS residential & vacancy data to our nationwide dataset,
- Well for municipalities, communities & land banks, you will now be able to see which properties are most likely vacant & which are purely residential.
- The value here is in knowing a property is unoccupied before it looks vacant externally, meaning tax foreclosure can be initiated sooner and a property's chance of coming to the Land Bank in good condition (meaning a higher chance for productive reuse) is improved.

# Customer Case Study: Flint Property Portal



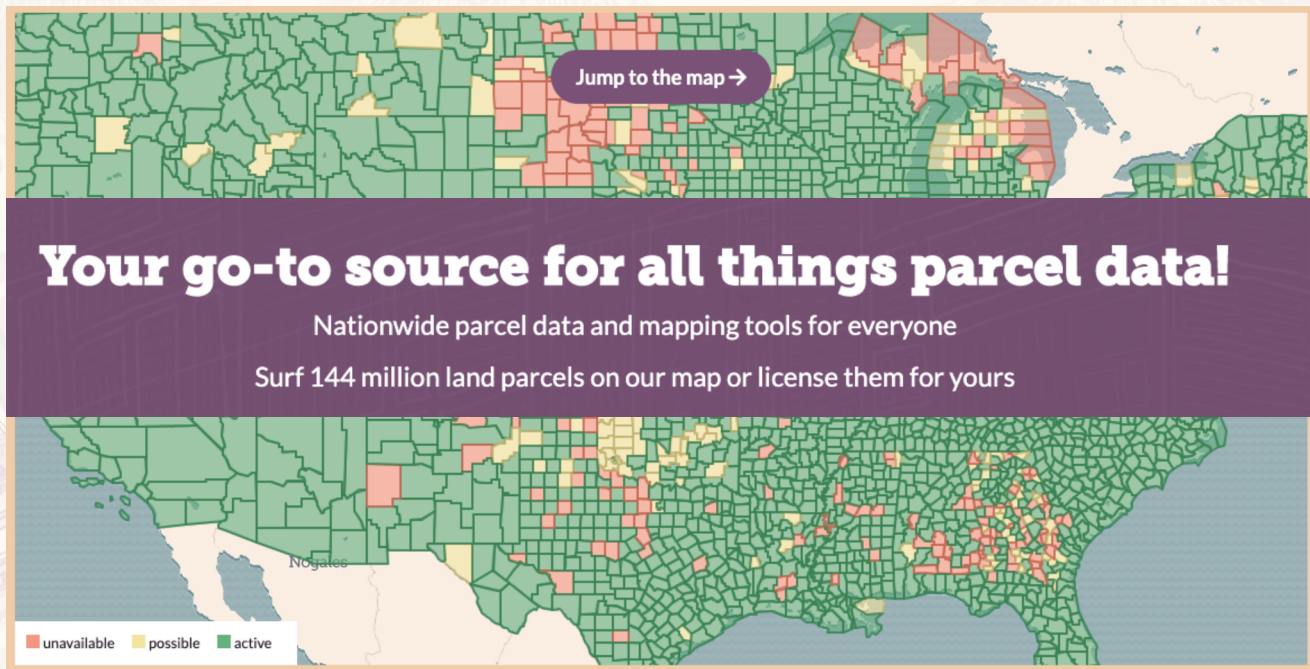
- We work with the City of Flint and the Genesee County Land Bank to provide the Flint Property Portal.
- The property portal is completely branded for the customer automatically updates from a variety of local data sources — including land bank properties that are for sale — and incorporates an ongoing property survey of property conditions and occupancy in Flint.
- Visit the portal here - <https://flintpropertyportal.com/>

# Customer Case Study: Neighbor to Neighbor



- We are very proud of our work helping the Quicken Loans Community Fund and the United Community Housing Coalition visit the 60,000 Detroit properties that are behind in their property taxes and at risk of facing foreclosure.
- Neighborhood canvassers use our software and app to visit homes and interview and counsel residents. This is cutting-edge data technology combined with a human approach to understanding and solving hard problems.
- Please see the powerful, visual project report [here](#).

# Loveland Technologies & Landgrid.com



- Loveland Technologies is a nationwide property mapping and data company dedicated to mapping America's land grid at the parcel level.
- We started out mapping blight and tax foreclosure in Detroit, Michigan and realized how fundamental parcel data is to communities across the country.
- Our software is and has been used by hundreds of customers in many cities and is customizable to projects and organizations of all sizes.
- We've been in the business for a decade and continue to push the envelope of what's possible while bringing accumulated wisdom to our work.

# Landgrid Enterprise

Contact us at [enterprise@landgrid.com](mailto:enterprise@landgrid.com) to discuss your needs with the team .

Thank you very much. We look forward to working together.

## Loveland Technologies

[Landgrid.com](http://Landgrid.com)

407 E Fort St, Suite 100 Detroit, MI 48226

[enterprise@landgrid.com](mailto:enterprise@landgrid.com)

